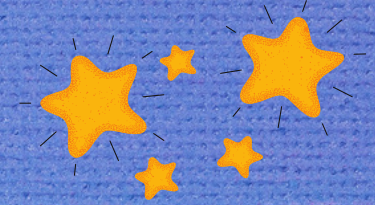


# IWK Recreation Therapy

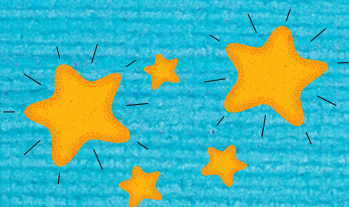
## Adapted Equipment Loan Program



### What is Recreation Therapy?

Recreation Therapy is a practice that utilizes a therapeutic process, involving leisure, recreation and play as a primary tool for each individual to achieve their highest level of independence and quality of life.

-CTRA, 2019



# EQUIPMENT LOAN PROGRAM: RECREATION THERAPY



The IWK Pediatric Rehabilitation Service Equipment Loan Program was established through the ongoing support of the IWK Auxiliary to give families of children and youth with a physical or developmental disability the opportunity to borrow a variety of resources.

This guide outlines items available for loan. To borrow adapted equipment please contact the Recreation Therapy Associate at (902) 470-3840.

## GUIDELINES

*Equipment will be loaned on a first come, first serve basis by contacting Recreation Therapy.*

It is the responsibility of the family to arrange drop-off and pick-up. If traveling to pick up the item is not feasible please discuss with a Recreation Therapist to make alternative arrangements.

The Recreation Therapist will review the item and its functions with the adult borrower and child/youth, as appropriate prior to loaning.

The equipment will be inspected for damage when equipment is loaned and when it is returned.

A special thank you to the IWK Auxiliary for their generous support of our Equipment Loan Program.



# THE HIPPOCAMPE

- **All Terrain**
- **Can be used in water**
- **Lightweight**
- **Great for snow!**





## Accessories!

- **Ski kit**
- **Beach Wheels**
- **Transport bag**



# TRICYCLES AND BICYCLES

- Range of motion
- Balance and support
- Increased mobility
- Facilitate participation in school activities, physical education
- Outdoor/Indoor activity
- Social Interaction

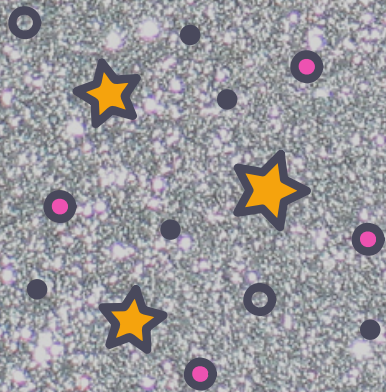


# FREEDOM CONCEPTS BIKES



## DCP MINI

- 18 months to 5 years
- inseam 6"-16"





# DCP 12/16



- **DCP 12** for kids ages 4-8
- inseam 14"-20"

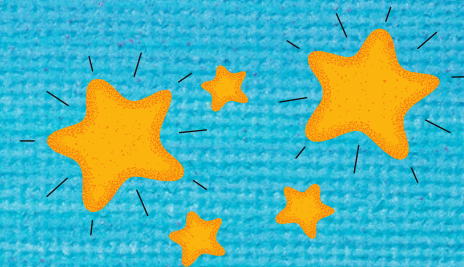


- **DCP 16** for kids ages 7+
- inseam 20"-26"

# Adventurer



- Youth sized trike
- inseam 2 +"





# RIFTON BIKES

- R120
- R1 0
- R140
- RACE RUNNER



## Inseams:

R120 = 17-22"

R1 0 = 22-28"

R140 = 25- 5"



# TRIAID BIKES



- **Imp**
- **Terrier**
- **TMX**
- **Tracker**



## Inseam Lengths:

<b>Imp</b>	<b>12.5-17"</b>
<b>Terrier</b>	<b>16.5-21.5"</b>
<b>TMX</b>	<b>20-25"</b>
<b>Tracker 20</b>	<b>24-29"</b>
<b>Tracker 24</b>	<b>25- 0"</b>



# HAND CYCLES



- **Mini Tri-Lo (2.5+ years)**
- **L'il Exclerator (height = 42"-62")**
- **Top End XCL (height = 60"+)**

- **Core and arm strength**
- **Coordination**
- **Social opportunities**



# SUPPORTIVE TRAINING WHEELS

Balance, Coordination, Stability!



SUITABLE FOR BIKES

16-24"



# DUET CYCLE/WIKE



## Duet Cycle

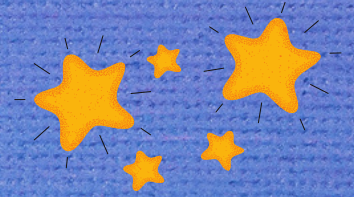
- chair holds up to 275 lbs.
- front chair disconnects and can be used independently



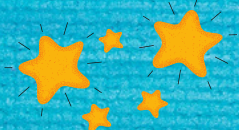
## Wike

- Accommodates older children/youth or two smaller children up to 125 lbs.
- Converts to jogger
- Support accessories available

# YOUTH TRIKES/MOBO



- **Low step-through**
- **Classic pedalling**
- **Hand brakes**
- **Geared and Coaster bikes**
- **Children and Youth riders**
- **16"-24" sizes**



# Our Semi-Recumbent Trikes

- **LOW TRANSFERS**
- **LARGER CAPACITY**
- **FREEDOM AND INDEPENDENCE**



## Low Rider

- 25"+ inseam
- 20" wheels
- max weight capacity 550 lbs



## FC Odyssey

- 19-34" inseam
- 225 lb max capacity

# SPORT CHAIRS



- **Indoor gym activities**
- **Multisport**
- **sizes 10"-17"**
- **Tool in the toolbox!**



# PARA ICE HOCKEY



**At the rink!**



# The Equipment

- Pediatric and youth sizes
- Push bars
- Tilt feature



# SWIM DEVICES

- LJ-A
- LJ-V
- PFD-A
- sizes XXS-XL



# ADAPTIVE SNOW SLED

- **CROSS COUNTRY SKI**
- **WINTER TRAIL AND PLAYGROUND ACCESS**



# SOME OF OUR ACCESSORIES

## SEATING INSERTS



## GRIP



## Bike Trailers



# Fundamental Movement Skills Equipment



# **IWK Recreation Therapy Contact Information**

Please contact us if you have any questions or inquiries about recreation therapy, adapted equipment, the loan program, home and/or school visits or referrals regarding recreation participation and community opportunities for your child.

**902-470-3840**

**Please check out our Facebook page!**





IWK Health